

## SYSTEM REQUIREMENTS

- DoorBird IP Video Door Station D10x/D11x/D20x/D21x-Series or DoorBird IP Upgrade D301A (Audio only)
- Fibaro Home Center Lite

## ADDITIONAL INFORMATION

The following guide will take you through the steps of setting up a DoorBird IP Video Door Station in connection with Fibaro Home Center Lite.

Please make sure that Fibaro Home Center Lite is connected to the same local network your DoorBird IP Video Door Station is connected to. Please also make sure that your DoorBird is online, using this service:

<https://www.doorbird.com/checkonline>

The local IP address of your DoorBird is available from the same page.

## FIRMWARE INFORMATION

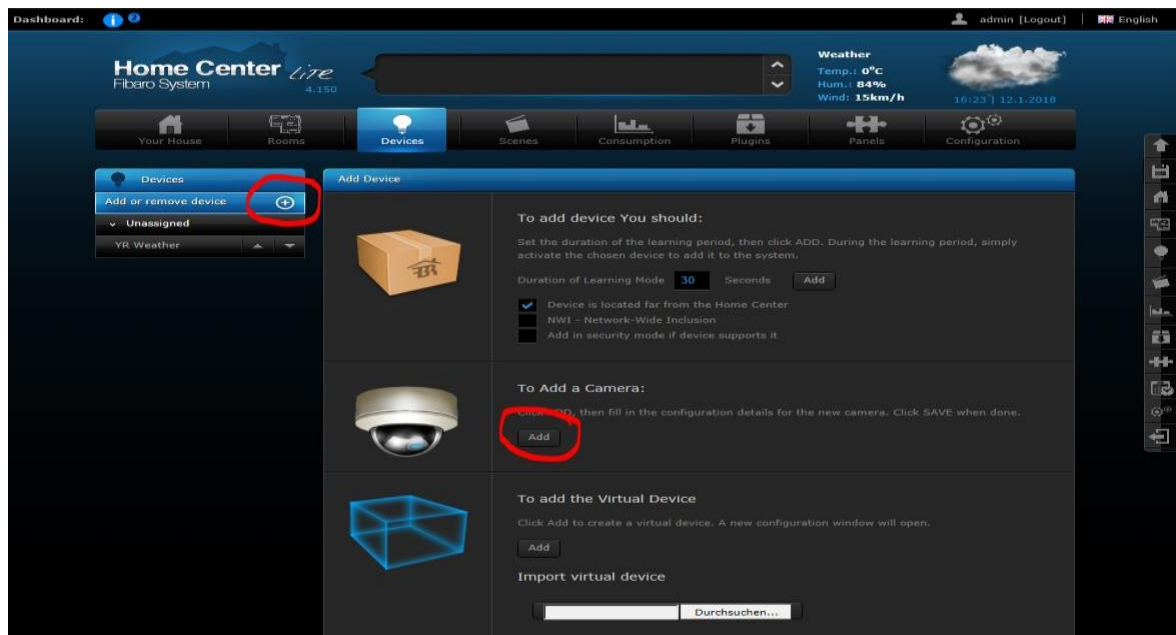
This manual was tested using the following firmware versions:

DoorBird IP Video Door Station: 000122

Fibaro Home Center Lite: 4.56

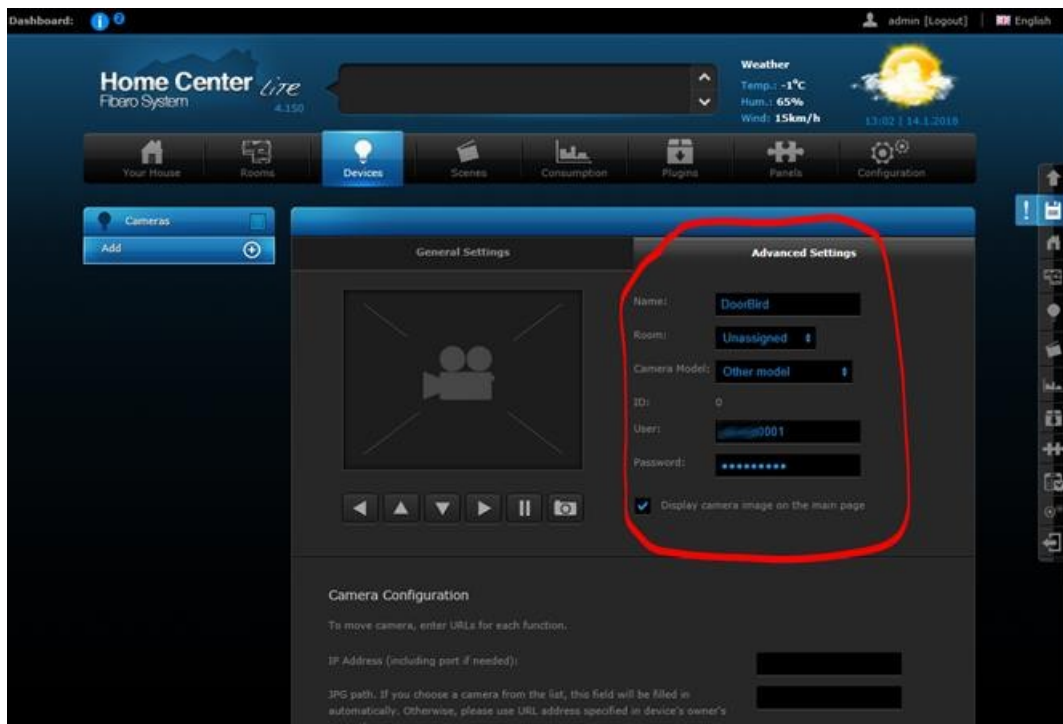
## 1. SETTING UP FIBARO HOME CENTER LITE

1. Connect to your Fibaro Home Center Live and log in with your login details.
2. From the setup area, navigate to the “**Devices**” section and add a new camera.



3. Give the camera a name of your choosing, e.g. “**DoorBird**” and switch over to the “**Advanced Settings**” area.

4. Change the **“User Name”** to the App user from the **“DIGITAL PASSPORT”** document that was shipped with your DoorBird IP Video Door Station, e.g. **“user0001”**. Enter the password associated with the App user into the **“Password”** field.

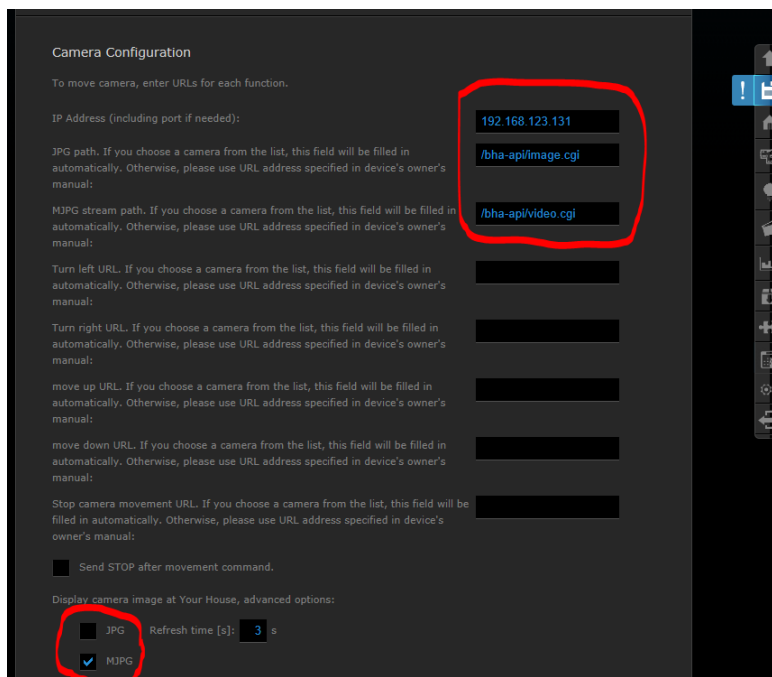


5. Scroll down to the **“Camera Configuration”** area and enter the IP address of your DoorBird IP Video Door Station into the **“IP Address”** field.

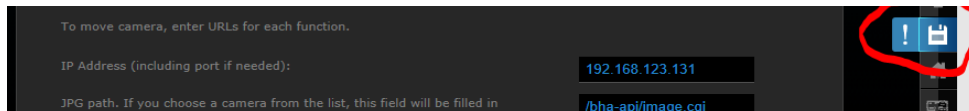
For the **“JPG path”**, enter **/bha-api/image.cgi**

For the **“MJPG stream path”**, enter **/bha-api/video.cgi**

6. At the bottom of the **“Camera Configuration”** area, make sure **“MJPG”** is checked.



7. Click on the disk symbol to store the settings.

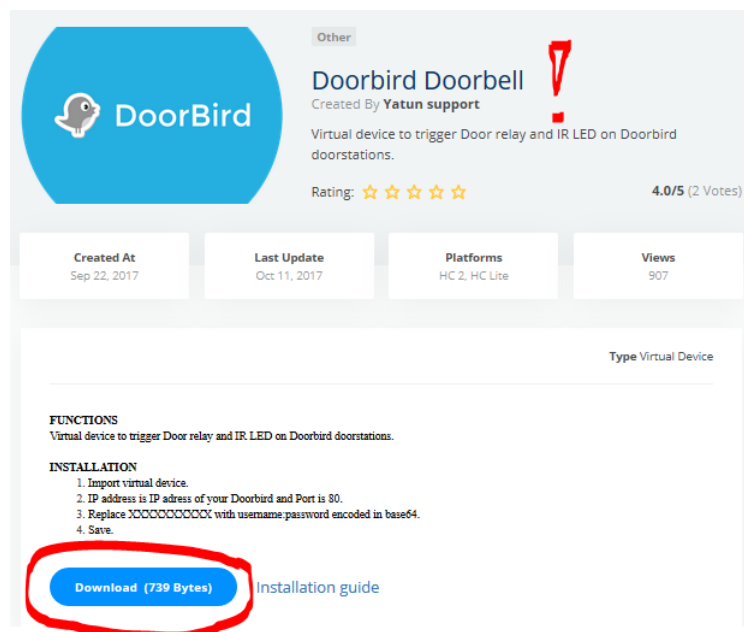


8. If everything has been entered correctly you should see a live image of your DoorBird IP Video Door Station listed under "Devices".

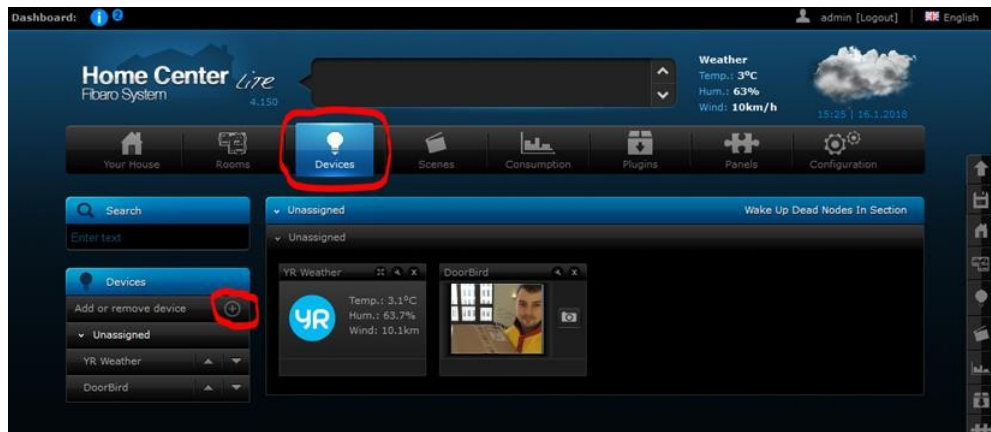


9. Activating the door opener and infrared lighting requires the additional Fibaro App "**DoorBird Doorbell**" from the Fibaro Marketplace.

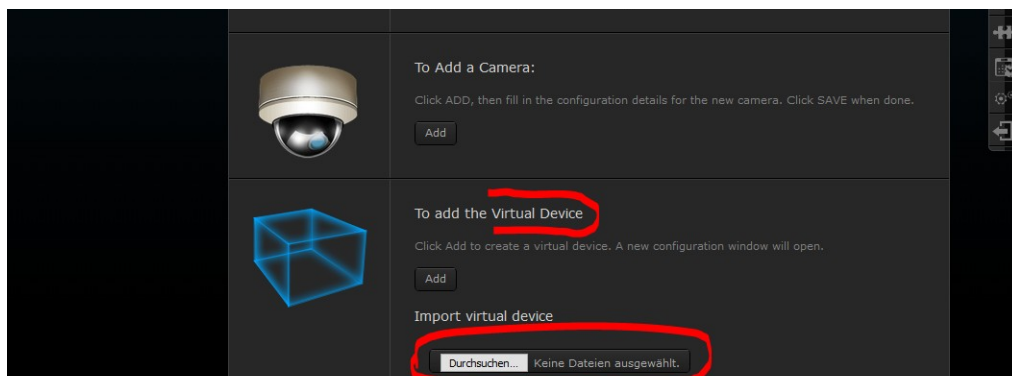
10. To download it, go to <https://marketplace.fibaro.com/items/doorbird>



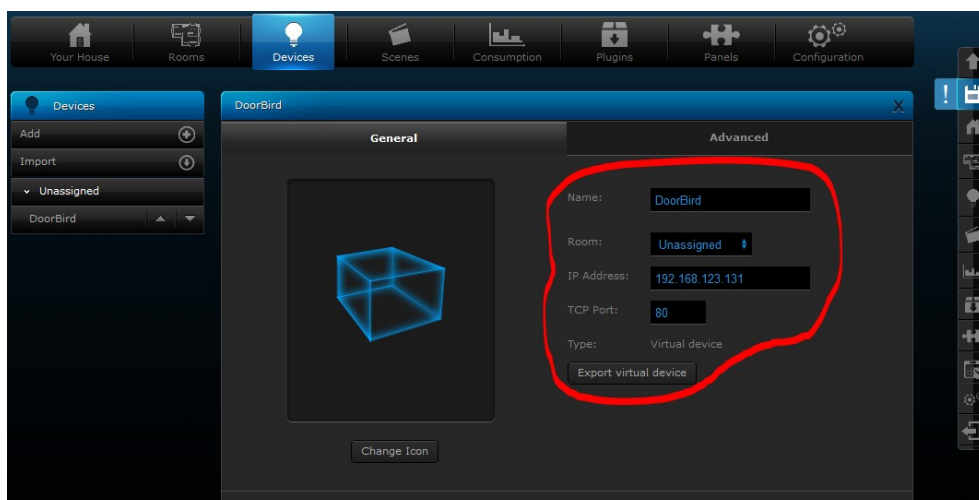
11. After downloading the Fibaro App "**DoorBird Doorbell**" from the Fibaro Marketplace, log into Fibaro Home Center Live again, return to the "Devices" section and click the "Add" button to re-open the selection menu.



12. Create a new virtual device and include the previously downloaded Fibaro App “DoorBird Doorbell”.



13. The configuration interface will automatically open after the “DoorBird Doorbell” App is successfully integrated. Here, enter the IP address of your DoorBird IP Video Door Station into the “IP Address” field and set “Port” to “80”.



14. Switch to the “Advanced” Tab and scroll down to the bottom.

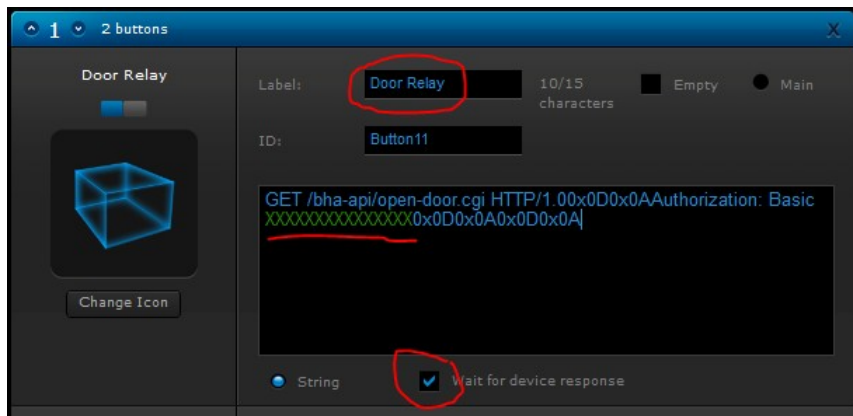
15. For the “Door Relay”, enter the following (see image below for visual reference):

**GET /bha-api/open-door.cgi HTTP/1.0**  
**Authorization: Basic**  
**XXXXXXXXXXXXXXXXXXXX0x0D0x0A0x0D0x0A**

Where **XXXXXXXXXXXXXXXXXXXX** is a Base64 encoded representation of your DoorBird App Username (e.g. “user0001”) and password. To obtain such a Base64 representation, use a tool like

<https://www.base64encode.org/> to generate one, entering your App Username and password separated by a colon, e.g.

user0001:password



16. Do the same for the IR LED, replacing **/bha-api/open-door.cgi** with **/bha-api/light-on.cgi**:

**GET /bha-api/light-on.cgi HTTP/1.00x0D0x0AAuthorization: Basic  
XXXXXXXXXXXXXXXXX0x0D0x0A0x0D0x0A**

17. Your DoorBird IP Video Door Station is now integrated into Fibaro Home Center Live.

For questions and problems regarding the product “Fibaro Home Center Lite” please contact the manufacturer online: <http://Fibaro.com/en/contact>

For questions and problems regarding our devices (DoorBird IP Video Door Station) please use the contact for to get In touch with our technical support: <https://www.doorbird.com/contact>