



MINI KEYPAD RFID/Z-WAVE

QUICK INSTALLATION GUIDE v1.2

TRADEMARKS

Zipato and the Zipato logo are registered Trademarks. All other product names mentioned herein may be trademarks or registered trademarks of their respective companies.

NOTICE

Although Zipato has attempted to ensure the accuracy of the content of this manual, it is possible that this document may contain technical inaccuracies, typographical, or other errors. Zipato assumes no liability for any error in this publication, and for damages, whether direct, indirect, incidental, and consequential or otherwise, that may result from such error, including, but not limited to loss of data or profits. Zipato provides this publication "as is" without warranty of any kind, either express or implied, including, but not limited to implied warranties of merchantability or fitness for a particular purpose. The published information in the manual is subject to change without notice. Zipato reserves the right to make changes in the product design, layout, and driver revisions without notification to its users. This version of the Installation guide supersedes all previous versions.

ELECTROMAGNETIC COMPATIBILITY

In proper state and when operated properly, the product complies with all the requirements in respect of interference radiation according to EN 301 489-17, EN 301 489-1 and EN 300 328. The connections conducting HF signals must neither be manipulated nor damaged.

TAKE CARE OF YOUR SAFETY

Display extreme caution when using ladders or steps, please follow manufacturer's instructions. Be careful when using hand and power tools and follow the manufacturer's guidelines when using them. Take care that the correct tools are used. Wear goggles or protective clothing where required.

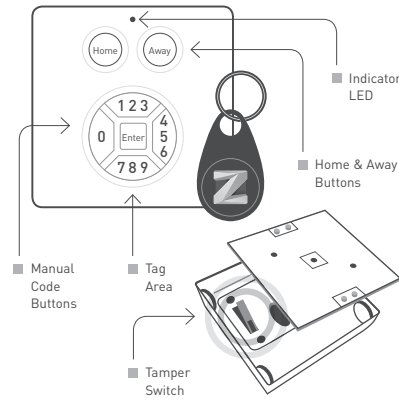
INTRODUCTION

TECHNICAL SPECS

NORMAL OPERATING VOLTAGE	2x AA 1,5V batteries
RANGE	Up to 30m line of sight
PROTOCOLS SUPPORTED	ISO15693, ISO18000-3, Tag-it™, RFID
BUZZER-SOUND	Approximately 60dBa at 10 cm distance

BASIC OPERATIONS

- The Mini Keypad RFID/Z-Wave can arm/disarm a security system.
- The Mini Keypad RFID/Z-Wave can read Mini Keypad RFID/Z-Wave-tags.
- The Mini Keypad RFID/Z-Wave has the possibility for the user to manually insert codes.
- The Mini Keypad RFID/Z-Wave's indicator light will react differently on each action.
- The Mini Keypad RFID/Z-Wave has a buzzer, which can be used as walk-in/walk-out notification (alarm is being disabled/activated).



MOUNTING

- Use a flat screwdriver at the inlets on the sides to gently unlock the back cover.
- Use the designated holes on the back cover to screw mount the Mini Keypad RFID/Z-Wave.
- Place two AA 1,5V batteries into the device.
- Mount the Mini Keypad RFID/Z-Wave onto the back cover, be sure to close it on all sides and that the tamper gets through the back cover of the Mini Keypad RFID/Z-Wave. (indication mode: Tamper pressed/released).
- After 1 seconds startup routine begins (indication mode: Ready for learn mode).
- After 3 more seconds (4 seconds in total) mounting is completed. (indication mode: Mounting successful)
- The Mini Keypad RFID/Z-Wave is now ready to use.

INCLUDE OR EXCLUDE IN Z-WAVE NETWORK

- Make sure your Z-Wave controller is in the right operation mode (include or exclude)
- Press and hold the tamper for 1 seconds and release to start the inclusion/exclusion process (indication mode: Ready for learn mode).
- The product will start NWI automatically after unsuccessful normal inclusion)

CONTROL

The Mini Keypad RFID/Z-Wave operates as an access control device, using the combination of the USER_CODE command class and the ALARM_V2 command class. UserCodes are to be stored in the Mini Keypad RFID/Z-Wave, using the USER_CODE_SET command. When the UserCodes are stored in the Mini Keypad RFID/Z-Wave, the ALARM_REPORT_V2 will have the corresponding USER_ID with the used USER_CODE.

There are two types of Access Control with UserCodes:

- Manually by using the buttons on the Mini Keypad RFID/Z-Wave
- Using the Mini Keypad RFID/Z-Wave reader and Tags

The difference in using one of the above mentioned methods is:

- When pressing Home/Away, the manual codes (1-4) can be pressed within 1 second. After entering the code the user must press ENTER and the USER_CODE_REPORT or ALARM_REPORT_V2 will be sent.
- When the user waits 1 second after pressing Home/Away, the Mini Keypad RFID/Z-Wave reader is started and a Tag can be presented at the Mini Keypad RFID/Z-Wave. After successful read, the USER_CODE_REPORT or ALARM_REPORT_V2 will be sent. Because the RFID code are not readable on the Tags, the Mini Keypad RFID/Z-Wave has some special procedures. Some examples are given at the **Typical operation diagrams** chapter in the **Technical Manual**.

- There are some situations:
 - IN CASE AN UNKNOWN MANUAL CODE ENTERED OR UNKNOWN TAG PRESENTED.** In this case, the Mini Keypad RFID/Z-Wave will send an unsolicited USER_CODE_REPORT with UserID 0 and UserID Status 0. A controller will receive this report and can initiate a USER_CODE_SET to the Mini Keypad RFID/Z-Wave.
 - IN CASE A KNOWN MANUAL CODE OR TAG IS PRESENTED.** This means, this code was previously SET using the USER_CODE_SET command. Then the Mini Keypad RFID/Z-Wave will respond with an ALARM_REPORT_V2 with Type 6 and Event 0x05 or 0x06. When the user presses Home, event 0x06 (Keypad Unlock) will be used. When the user presses Away, event 0x05 (Keypad Lock) will be used.

INDICATION MODES

- The indicator gives various statuses of the device as follows:
 - Ready for learn mode: Indicator light blinks every second.
 - Learn in progress (add): Indicator light blinks 2 times per second.
 - Learn in progress (remove): Indicator light blinks 3 times per second.
 - Learn mode success: Indicator light is on for 1 second.
 - Learn mode failed: Indicator light blinks 8 times fast.
 - Tamper pressed/released indicator light blinks 3 times rapidly.
 - Mounting successful indicator light is on for 1 second.
 - Busy sending an RF message Indicator light is blinking each second, while most of the time on.
 - RF message send failed indicator light blinks 6 times rapidly

TECHNICAL MANUAL

CAUTION

- This device is using a radio signal that passes through walls, windows and doors. The range is strongly influenced by local conditions such as large metal objects, house wiring, concrete, furniture, refrigerators, microwaves and similar items. On average, the indoor range is approximately 30 meters.
- Do not expose this product to excessive heat or moisture.
- Prevent long term exposure to direct sunlight.
- Do not attempt to repair this product. If the product is damaged or if you are in doubt about the proper operation, take the product back to the place of purchase.
- Do not clean the product with any liquid.

TECHNICAL DETAILS:

NORMAL OPERATING VOLTAGE	2x AAA 1,5V batteries From 2,3 to 4,0Vdc do not use rechargeable batteries
WIRELESS RANGE	Up to 30m in line of sight
PROTOCOLS SUPPORTED	ISO15693, ISO18000-3, Tag-it™, RFID
BUZZER-SOUND	Approx. 60dB at 10 cm distance
STORAGE TEMPERATURE	-5 °C to +65 °C
STORAGE HUMIDITY	10% to 70%
OPERATING TEMPERATURE	10°C to 40°C
OPERATING HUMIDITY	30% to 80%

SUPPORTING COMMAND CLASSES

BASIC TYPE	BASIC_TYPE_ROUTING_SLAVE
GENERIC TYPE	GENERIC_TYPE_ENTRY_CONTROL
SPECIFIC TYPE	SPECIFIC_TYPE_NOT_USED
LISTENING	FALSE, Z-Wave Lib: 4.51



- CLASS: 0x85 COMMAND_CLASS_ASSOCIATION
- CLASS: 0x80 COMMAND_CLASS_BATTERY
- CLASS: 0x84 COMMAND_CLASS_WAKE_UP
- CLASS: 0x86 COMMAND_CLASS_VERSION
- CLASS: 0x72 COMMAND_CLASS_MANUFACTURER_SPECIFIC_V2
- CLASS: 0x71 COMMAND_CLASS_ALARM_V2
- CLASS: 0x70 COMMAND_CLASS_CONFIGURATION
- CLASS: 0x25 COMMAND_CLASS_SWITCH_BINARY
- CLASS: 0x63 COMMAND_CLASS_USER_CODE

NOT LISTENING ROUTING SLAVE

This Z-Wave product will be used as routing slave. Slave nodes are nodes in a Z-Wave network that receive commands and perform actions based on the command. This device will always be in sleep mode because it works on batteries. In sleep mode the device is not active listening, the device will wake up according to the wakeup command class.

INCLUDE INITIATOR

The include initiator is used when Primary and Inclusion Controllers include nodes into the network. When both the include initiator have been activated simultaneously the new node will be included to the network (if the node was not included previously).

EXCLUDE INITIATOR

The exclude initiator is used by Primary and Inclusion Controllers to exclude nodes from the network. When the exclude initiator and a slave initiator are activated simultaneously, it will result in the slave being excluded from the network (and reset to Node ID zero). Even if the slave was not part of the network it will still be reset by this action.

Z-WAVE COMPATIBILITY

Because this is a Z-Wave device, it means it can co-operate with other Z-Wave devices of other manufacturers. It can co-exist in a Z-Wave network existing with product from other manufacturers.

HOPS & RETRIES

The Z-Wave range has a range of up to 30 meters in line of sight. This signal is not limited to the 30 meter range due to routing the Z-Wave message to other nodes in the network. This way the range of the Z-Wave network can be expanded to 150 meters indoors (limit of 4 hops).

CLASS: 0x63 COMMAND_CLASS_USER_CODE

The purpose of the User Code Command Class is to configure the Mini Keypad RFID/Z-Wave to accept certain RFID Tags or codes. This is typically done by some kind of static controller or gateway (for instance the Wintop iGate). After sending a User Code Set, including a unique User Identifier (UID), the in-use state (0x01) and the Tag code or keypad sequence using ASCII codes, the Mini Keypad RFID/Z-Wave will accept the code and notify any other device using the Alarm Command Class. This other device can be configured using the Association Command Class and is typically the same controller or gateway. When a tag or code is not known to the Mini Keypad RFID/Z-Wave, it will send an unsolicited report to the devices in its association group with the UID 0x00. The value in this message can be used to configure new tags.
NOTE: Code length must be 4 to 10 ASCII digits.

CLASS: 0x86 COMMAND_CLASS_VERSION

This Command Class is used to obtain information about the Mini Keypad RFID/Z-Wave. The Z-Wave library type, the Z-Wave protocol version and the application version will be reported.

CLASS: 0x72 COMMAND_CLASS_MANUFACTURER_SPECIFIC_V2

This will report information about the manufacturer. This product will contain the manufacturer ID of Wintop. Manufacturer ID of Wintop is 0x97, the ID of this product is 0x31. This command class can also be used to request the serialnumber of the device.

CLASS 0x20 COMMAND_CLASS_BASIC

The basic command class only has a supporting role and is mapped to the Switch Binary Command Class.

CLASS 0x25 COMMAND_CLASS_SWITCH_BINARY

The Switch Binary Command Class is used to enable or disable the notification sound. This sound is typically used to notify a user when the alarm system is being activated. See also the 'Sound Notification' section.

CLASS: 0x80 COMMAND_CLASS_BATTERY

This class is used to request and report battery levels for a given device. When battery level is lower than 20% the Mini Keypad RFID/Z-Wave will send a battery warning (value 255) after every wake up notification. A battery get will report the actual value even if below 20%.



MINI KEYPAD RFID/Z-WAVE

QUICK INSTALLATION GUIDE v1.2

CLASS: 0X85 COMMAND_CLASS_ASSOCIATION

The Association Command Class is used to associate the Mini Keypad RFID/Z-Wave to other devices. When a tag or code is read, the Mini Keypad RFID/Z-Wave will send a notification to the Z-Wave devices in its association group. It will also report the state of the tamper alarm to the devices in this association group.

- Number of groupings: 1
- Maximum supported nodes per group: 5

CLASS: 0X84 COMMAND_CLASS_WAKE_UP

The Wake Up Command Class is used at battery-operated devices. This class allows the Mini Keypad RFID/Z-Wave to wake up occasionally to notify others devices, that the Mini Keypad RFID/Z-Wave is ready to receive commands. After receiving the commands the Mini Keypad RFID/Z-Wave will go into sleep mode again. The wake up interval can be set using the WAKE_UP_INTERVAL_SET command.

The default value is 0x1C20 = 7200 sec = 2 hour
The default node is 0xFF = 255 (broadcast)

It is possible to send a **wake up notification** on user interaction. Besides sending a Wake Up Notification automatically every 2 hours (or any other time that is configured using the Wake Up Interval Set command), the Mini Keypad RFID/Z-Wave also sends a Wake Up Notification when:

- The tamper alarm state changes (Mini Keypad RFID/Z-Wave is mounted or removed from the wall)
- A tag read
- A code is entered using the keypad

When the wake up time is set to 0 a **wake up notification** is never sent periodically, only on user interaction.

CLASS: 0X70 COMMAND_CLASS_CONFIGURATION_V1

CONFIGURE PARAMETERS:

- 1 | Set to default
 - DESCRIPTION:
 - Set all configuration values to default values (factory settings). Read more in chapter Configuration Reset.
 - SIZE: 1 byte*
 - PARAM1: if 0xFF then set to default
 - PARAM2,3,4: not used
- 2 | Feedback time
 - DESCRIPTION:
 - To configure the time the beep is automatically turned off in seconds.
 - DEFAULT: 0x0F
 - PARAM1: 0x00 means disabled, 0xFF is endless.
 - PARAM2,3,4: not used
 - SIZE: 1 byte*
- 3 | Feedback timeout
 - DESCRIPTION:
 - To configure the timeout to wait for a WAKEUP_NO_MORE_INFORMATION before the error beep is automatically sound.

The error beeps are fixed 8 beeps shortly after each other.

- DEFAULT: 0x00
- PARAM1: 0x00 means disabled
- PARAM2,3,4: not used
- SIZE: 1 byte*

4 | Feedback beeps per second

- DESCRIPTION:
- To configure the number of beeps per second. Every beep is fixed about 10ms.
- DEFAULT: 0x02
- PARAM1: nr of beeps per second
- PARAM2,3,4: not used
- SIZE: 1 byte*

5 | The mode

- DESCRIPTION:
- To configure the operating mode.
- DEFAULT: 0x01
- SIZE: 1 byte*
- PARAM1:
- MODE 1: Normal operating mode.
- MODE 3: Z-Wave chip is always on to request e.g. version or manufacturer id. If any mode other than 3, that value will be reported after a get but will be handled in SW as mode 1.
- PARAM2,3: not used.

* if a size is other then given size the frame is ignored totally so configuration values are not changed

CLASS: 0X71 COMMAND_CLASS_ALARM_V2

In the Mini Keypad RFID/Z-Wave, this Command Class has two purposes:

- 1 | Identify the state of the tamper alarm. The device will send an unsolicited report to the devices in its association group if tempering is detected. The state of the tamper alarm can also be requested by any other device.
- 2 | Report tags or codes that are entered. The Mini Keypad RFID/Z-Wave will send an unsolicited report to the devices in its association group with the UID that belongs to the code or tag and whether the alarm system should be armed (Away) or disarmed (Home).

Every other alarm type that is requested will be ignored by application.

CONFIGURATION RESET

The Mini Keypad RFID/Z-Wave supports a configuration reset function.

CONFIGURATION RESET MEANS

- All configuration values are defaulted.
- Wake up interval is defaulted.

This function can be activated by sending a configuration set frame:

- CONFIGURATION_SET
- PARAMETER: 0x01
- SIZE: 0x01 (can't be different from 1)
- VALUE: 0xFF (can be any value except for 0x55)

When the value of configuration value is requested 2 possible values can be returned CONFIGURATION_REPORT

- PARAMETER: 0x01
- VALUE 0x55: Configuration settings of the device are altered. The device will report this even if the configuration parameters are changed back to the default value.
- VALUE 0xAA: Configuration of the device is untouched. Note that this value will not change to 0x55 upon modifying the wake up interval and that re-setting the value to 0xAA will always reset the wake up interval.

ALWAYS AWAKE MODE

The always awake mode is used to request different values from the device e.g. version and manufacturer specific.

NOTE: in always awake mode the batteries will be drain very fast, we do not recommend to use this mode for a longer period. Always awake mode should only be used in order to configure the device.
NOTE: it is not possible to use the buttons of the Mini Keypad RFID/Z-Wave while it is operating in always awake mode.

The always awake mode can be activated by:

- CONFIGURATION_SET
 - PARAMETER: 0x05
 - SIZE: 0x01 (can't be different from 1)
 - VALUE: 0x03 (mode 3)
- The LED of the device will toggle on and off every second to notify you that it is functioning in always awake mode.

The always awake mode can be deactivated by:

- CONFIGURATION_SET
 - PARAMETER: 0x05
 - SIZE: 0x01 (can't be different from 1)
 - VALUE: Any value except 3
- A second option to deactivate mode 3 is:
- 1 | Remove batteries.
 - 2 | Wait ca 10 seconds
 - 3 | Replace batteries

SOUND NOTIFICATION

The Mini Keypad RFID/Z-Wave is capable of playing a notification sound. This feature is typically used to notify a user that an alarm system is being activated. Since the Mini Keypad RFID/Z-Wave is a non-listening device, the feature can not be controlled at all times.

It requires the Mini Keypad RFID/Z-Wave to wake up and send a Wake Up Notification. After sending a notification that a tag/code is read (either an unknown or already configured code), the Mini Keypad RFID/Z-Wave will send a Wake Up Notification. The notification sound can be turned on/off upon receiving any Wake Up Notification.

See the section about the Wake Up Command Class for information on when a Wake Up Notification is send.

NOTIFICATION SOUND AND ACKNOWLEDGEMENT

The Mini Keypad RFID/Z-Wave supports 3 types of notification sound configurations:

- 1 | Notification sound disabled (configuration parameter 2 set to zero)
- 2 | Notification sound enabled (default, configuration parameter 2 set to auto-stop time).
- 3 | Notification sound and acknowledgement enabled (configuration parameter 3 set to acknowledgement timeout). In the first mode, any Basic or Switch Binary commands that are received are ignored. The second mode, the default, can be used to inform a user that the alarm system is armed or disarmed. To use this, you can send a Basic or Switch Binary set on (0xFF) after receiving an Alarm Report and the Wake Up Notification following it.

The last mode can be used in situations where, for example, users can only disarm the alarm system at certain times. In this case, the user can be notified whether or not its code or tag is accepted.

By configuring configuration parameter 3, you can set an acknowledgement timeout. Whenever a Lock/Unlock Alarm Report containing an UID is send by the Mini Keypad RFID/Z-Wave, the acknowledgement timeout timer is started.

AFTER THIS THERE ARE TWO POSSIBILITIES:

- 1 | The Mini Keypad RFID/Z-Wave does not receive anything (or receives a Wake Up No More Information upon its Wake Up Notification). It starts the error sound to notify the user of the unaccepted code.
- 2 | The Mini Keypad RFID/Z-Wave receives either a Basic (or Switch Binary) on (to start the normal notification sound) or off (to silently acknowledge the code). The acknowledgement timer is stopped.

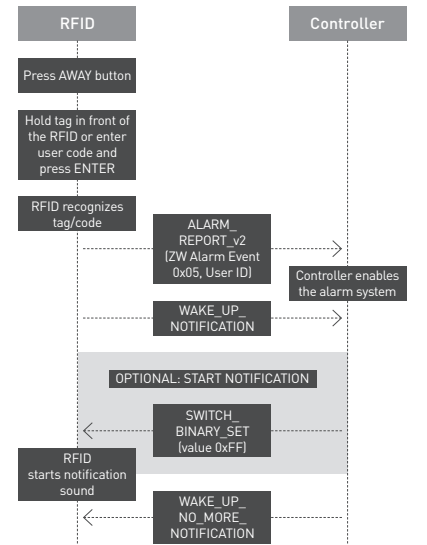
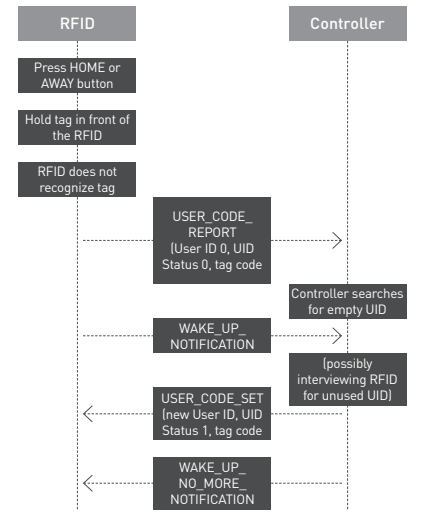
Note that it is actually possible to disable notification sound, but enable acknowledgement. In this case a silent acknowledgement can be both a Basic/Switch Binary on (0xFF) or off (0x00).

TYPICAL OPERATION DIAGRAMS

The following diagrams show the user action that is required and the messages which are being sent from/to the Mini Keypad RFID/Z-Wave for several basic operations, including optional functionality as the sound notification and UID acknowledgement.

CONFIGURE A NEW TAG

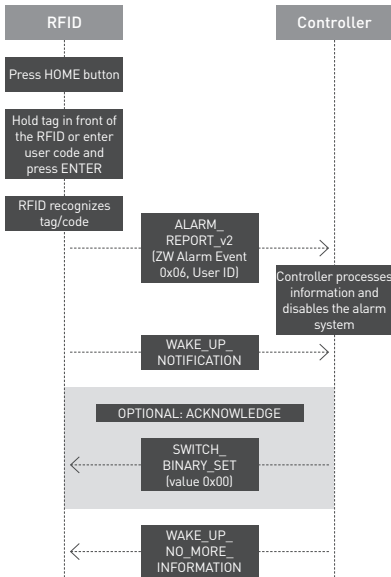
(for configuring new codes, you can skip directly to the WAKE_UP_NOTIFICATION).





MINI KEYPAD RFID/Z-WAVE

QUICK INSTALLATION GUIDE v1.2



TROUBLESHOOTING

☞ FREQUENTLY ASKED QUESTIONS

Q | Why doesn't the Mini Keypad RFID/Z-Wave read tags?

A | 1. The device is not (correctly) included in a Z-Wave network. Include the device and try it again.

2. Are you using the right tags? The supported protocols are ISO15693, ISO18000-3, Tag-it™.

3. The batteries are so empty that the device cannot startup, try putting new ones in.

4. The tamper switch is not fully or properly pressed. You should hear a clicking sound when the Tamper switch is pressed in completely.

Q: The buttons don't work, even when the batteries are in.

A | 1. The tamper switch is not fully or properly pressed. You should hear a clicking sound when the tamper switch is pressed in completely.

2. The batteries could be empty. Put new batteries in and try it again.

Q | I can't have the Mini Keypad RFID/Z-Wave included into my Z-Wave network, what am I doing wrong?

A | 1. Is the controller ready to include any device into the Z-Wave

network? If the controller is not in include or exclude mode, the Mini Keypad RFID/Z-Wave will not be included or excluded.

2. The Mini Keypad RFID/Z-Wave is already included in a Z-Wave network. Exclude the Mini Keypad RFID/Z-Wave and Try to include it again.

Q | I have configured a value but when I request it, it is not changed?

A | It is mandatory that the correct size is used while configure a parameter; go to the documentation about the configuration command class to check if the right size is used during configuration. If the wrong size is used the frame is ignored totally.

Q | I have configured a new value and when I request it the correct value is returned but the behavior is still the same?

A | Some configuration parameters have limits of what they can do, go to the documentation about configuration to check if the value of the configured parameter is out of limit.

Q | When I mount the Mini Keypad RFID/Z-Wave it performs its standard mounting routine but after 8 seconds the indicator light doesn't go on for 1 second but blinks 6 times.

A | blinking 6 times can mean:

1. Mini Keypad RFID/Z-Wave is not included
 2. Mini Keypad RFID/Z-Wave is not associated
 3. Mini Keypad RFID/Z-Wave can't reached his destination
- If all three options are corrected, the Mini Keypad RFID/Z-Wave will operate correctly and can be mounted again.

☞ TECHNICAL SUPPORT

Having trouble installing your new product?

Zipato's website contains the latest user documentation and software updates for Zipato products and services.

www.zipato.com

☞ CALL SUPPORT

+385 1 4004 404
[Mon-Fri] 9.00am-06.00pm

MODELS AND FREQUENCIES

☞ MODELS

EUROPEAN UNION - EU version	wt-rfid.eu
UNITED STATES - US version	wt-rfid.us
RUSSIA - RU version	wt-rfid.ru
ISRAEL - IS version	wt-rfid.is
AUSTRALIA - AU version	wt-rfid.au
INDIA - IN version	wt-rfid.in

☞ FREQUENCIES

EUROPEAN UNION - EU	868.42 MHz
UNITED STATES - US	908.42 MHz
RUSSIA - RU	869.02 MHz
ISRAEL - IS	916.02 MHz
AUSTRALIA - AU	921.42 MHz
INDIA - IN	865.20 MHz

LIMITED PRODUCT WARRANTY

☞ GENERAL TERMS

Nothing in this Limited Product Warranty affects your statutory rights as a consumer.

The Limited Product Warranty set forth below is given by Tri plus grupa d.o.o. (Europe) [herein referred to as "ZIPATO"]. This Limited Product Warranty is only effective upon presentation of the proof of purchase. Upon further request by ZIPATO, this warranty card has to be presented, too.

EXCEPT AS EXPRESSLY SET FORTH IN THIS LIMITED WARRANTY, ZIPATO MAKES NO OTHER WARRANTIES, EXPRESS OR IMPLIED, INCLUDING ANY IMPLIED WARRANTIES OF MERCHANTABILITY AND FITNESS FOR A PARTICULAR PURPOSE. ZIPATO EXPRESSLY DISCLAIMS ALL WARRANTIES NOT STATED IN THIS LIMITED WARRANTY, ANY IMPLIED WARRANTIES THAT MAY BE IMPOSED BY LAW ARE LIMITED IN DURATION TO THE LIMITED WARRANTY PERIOD, TO THE EXTENT ALLOWED BY LOCAL LAW, THE REMEDIES IN THIS WARRANTY STATEMENT ARE CUSTOMER'S SOLE AND EXCLUSIVE REMEDIES AGAINST ZIPATO. THEY DO NOT, HOWEVER, AFFECT OR RESTRICT THE RIGHTS YOU HAVE AGAINST THE BUSINESS YOU BOUGHT A ZIPATO PRODUCT FROM. IN NO EVENT WILL ZIPATO BE LIABLE FOR LOSS OF DATA OR FOR INDIRECT, SPECIAL, INCIDENTAL, CONSEQUENTIAL (INCLUDING LOST PROFIT OR DATA), OR OTHER DAMAGE, WHETHER BASED IN CONTRACT, TORT, OR OTHERWISE. HOWEVER, NOTHING IN THIS AGREEMENT LIMITS ZIPATO'S LIABILITY TO YOU (I) IN THE EVENT OF DEATH OR PERSONAL INJURY TO THE EXTENT RESULTING FROM ZIPATO'S NEGLIGENCE, OR (II) TO THE EXTENT RESULTING FROM ANY FRAUDULENT MISREPRESENTATION UNDER PART 1 OF THE CONSUMER PROTECTION ACT 1987 OF THE UNITED KINGDOM. SOME STATES OR COUNTRIES DO NOT ALLOW: (1) A DISCLAIMER OF IMPLIED WARRANTIES; (2) A LIMITATION ON HOW LONG AN IMPLIED WARRANTY LASTS OR THE EXCLUSION; OR (3) LIMITATION OF INCIDENTAL OR CONSEQUENTIAL DAMAGES FOR CONSUMER PRODUCTS. IN SUCH STATES OR COUNTRIES, SOME EXCLUSIONS OR LIMITATIONS OF THIS LIMITED WARRANTY MAY NOT APPLY TO YOU. THIS LIMITED WARRANTY GIVES YOU SPECIFIC LEGAL RIGHTS. YOU MAY ALSO HAVE OTHER RIGHTS THAT MAY VARY FROM STATE TO STATE OR FROM COUNTRY TO COUNTRY. YOU ARE ADVISED TO CONSULT APPLICABLE STATE OR COUNTRY LAWS FOR A FULL DETERMINATION OF YOUR RIGHTS.

This Limited Product Warranty applies to ZIPATO branded hardware products (collectively referred to as "ZIPATO Hardware Products") sold by ZIPATO (Europe), its European subsidiaries, affiliates, authorized resellers, or country distributors (collectively referred to as "ZIPATO Resellers") with this Limited Product Warranty.

The term "ZIPATO Hardware Product" is limited to the hardware components and all its internal components including firmware. The term "ZIPATO Hardware Product" DOES NOT include any software applications or programs.

☞ GEOGRAPHICAL SCOPE OF THE LIMITED PRODUCT WARRANTY

This Limited Product Warranty is applicable to Hardware Products sold by Zipato Resellers in all countries listed at the beginning of this document under the heading "Countries in which this ZIPATO Limited Product Warranty applies". The Limited Product Warranty will be honored in any country where ZIPATO or its authorized service providers offer warranty service subject to the terms and conditions set forth in this Limited Product Warranty. However, warranty service availability and response times may vary from country to country and may also be subject to registration requirements.

☞ LIMITATION OF PRODUCT WARRANTY

ZIPATO warrants that the products described below under normal use are free from material defects in materials and workmanship during the Limited Product Warranty Period set forth below ("Limited Product Warranty Period"), if the product is used and serviced in accordance with the user manual and other documentation provided to the purchaser at the time of purchase (or as amended from time to time).

ZIPATO does not warrant that the products will operate uninterrupted or error-free or that all deficiencies, errors, defects or non-conformities will be corrected.

This warranty shall not apply to problems resulting from: (a) unauthorized alterations or attachments; (b) negligence, abuse or misuse, including failure to operate the product in accordance with specifications or interface requirements; (c) improper

handling; (d) failure of goods or services not obtained from ZIPATO or not subject to a then-effective ZIPATO warranty or maintenance agreement; (e) improper use or storage; or (f) fire, water, acts of God or other catastrophic events. This warranty shall also not apply to any particular product if any ZIPATO serial number has been removed or defaced in any way.

ZIPATO IS NOT RESPONSIBLE FOR DAMAGE THAT OCCURS AS A RESULT OF YOUR FAILURE TO FOLLOW THE INSTRUCTIONS FOR THE ZIPATO HARDWARE PRODUCT.

☞ LIMITED PRODUCT WARRANTY PERIOD

The Limited Product Warranty Period starts on the date of purchase from ZIPATO. Your dated sales or delivery receipt, showing the date of purchase of the product, is your proof of the purchase date. You may be required to provide proof of purchase as a condition of receiving warranty service. You are entitled to warranty service according to the terms and conditions of this document if a repair to your ZIPATO branded hardware is required within the Limited Product Warranty Period.

[Other than in respect of products for domestic use (in particular those listed in the first and last boxes in the table below), this Limited Product Warranty extends only to the original end user purchaser of this ZIPATO Hardware Product and is not transferable to anyone who obtains ownership of the ZIPATO Hardware Product from the original end-user purchaser.

☞ PRODUCT WARRANTY PERIOD TABLE

PRODUCT TYPE	Mini Keypad RFID/Z-Wave
PRODUCT WARRANTY PERIOD	One (1) year

IMPORTANT

The content of "Product Type" listed above is subject to change; please refer to the www.zipato.com for latest update.

☞ PERFORMANCE OF THE LIMITED PRODUCT WARRANTY

If a product defect occurs, ZIPATO's sole obligation shall be to repair or replace any defective Zipato Hardware Product free of charge provided it is returned to an Authorized ZIPATO Service Centre during the Limited Warranty Period. Such repair or replacement will be rendered by ZIPATO at an Authorized ZIPATO Service Centre. All component parts or hardware products that are replaced under this Limited Product Warranty become the property of ZIPATO. The replacement part or product takes on the remaining Limited Warranty Period of the replaced part or product. The replacement product need not be new or of an identical make, model or part; ZIPATO may in its discretion replace the defective product (or any part thereof) with any reconditioned equivalent (or superior) product in all material respects to the defective product.

WARRANTOR

Tri plus grupa d.o.o.
Banjavecica 11
10 000 Zagreb
CROATIA

TELEPHONE +385 (1) 444 444 00
FACSIMILIE +44(0)208 955 9001



MINI KEYPAD RFID/Z-WAVE

QUICK INSTALLATION GUIDE
v1.2

DECLARATION OF CONFORMITY

The Manufacturer Tri plus grupa d.o.o. hereby declares that the product:

Zipabox Smart home controller 1



In accordance with the following Directive(s): 2006/95/EC The Low Voltage Directive, 89/336/EEC The Electromagnetic Compatibility Directive and 1999/5/EC R&TT EC Directive is in conformity with the applicable requirements of the following documents:

EN 61326 EN 61000-3-3 EN 61000-4-4 EN 61000-4-11
IEC/EN 55011 EN 61000-6-2 EN 61000-4-5 EN 301 489-1-3
EN 300 220-2 EN 61000-4-2 EN 61000-4-6 AS/NZS/IEC 60335-2-97
EN 61000-3-2 EN 61000-4-3 EN 61000-4-8 EN 60335-1

I hereby declare that the equipment named above has been designed to comply with the relevant sections of the above referenced specifications. The unit complies with all applicable Essential Requirements of the Directives.

Person responsible for this declaration:
Dean Janacek, Certification Manager
01.09.2012

Changes or modifications not expressly approved Tri plus grupa d.o.o. for compliance could void the user's authority to operate the equipment.



THIS DEVICE COMPLIES WITH PART 15 OF THE FCC RULES.

Operation is subject to the following two conditions:
1 | this device may not cause harmful interference, and
2 | this device must accept any interference received, including interference that may cause undesired operation.

Le présent appareil est conforme aux CNR d'Industrie Canada applicables aux appareils radio exempts de licence. L'exploitation est autorisée aux deux conditions suivantes:

1 | l'appareil ne doit pas produire de brouillage, et
2 | l'utilisateur de l'appareil doit accepter tout brouillage radioélectrique subi, même si le brouillage est susceptible d'en compromettre le fonctionnement.

NOTE: Changes or modifications not expressly approved by Zipato for compliance could void the user's authority to operate the equipment. This equipment has been tested and found to comply with the limits for a Class B digital device, pursuant to Part 15 of the FCC Rules. These limits are designed to provide reasonable protection against harmful interference in a residential installation. This equipment generates, uses and can radiate radio frequency energy and, if not installed and used in accordance with the instructions, may cause harmful interference to radio communications.

However, there is no guarantee that interference will not occur in a particular installation. If this equipment does cause harmful interference to radio or television reception, which can be determined by turning the equipment off and on, the user is encouraged to try to correct the interference by one or more of the following measures:

- Reorient or relocate the receiving antenna.
- Increase the separation between the equipment and receiver.
- Connect the equipment into an outlet on a circuit different from that to which the receiver is connected.
- Consult the dealer or an experienced radio/TV technician for help.

DISPOSING AND RECYCLING YOUR PRODUCT



This symbol on the product or packaging means that according to local laws and regulations this product should be not be disposed of in the household waste but sent for recycling. Please take it to a collection point designated by your local authorities once it has reached the end of its life, some will accept products for free. By recycling the product and its packaging in this manner you help to conserve the environment and protect human health.

ZIPATO AND THE ENVIRONMENT

At Zipato, we understand and are committed to reducing any impact our operations and products may have on the environment.

To minimize this impact Zipato designs and builds its products to be as environmentally friendly as possible, by using recyclable, low toxic materials in both products and packaging.

COPYRIGHT

© 2012 Tri plus grupa d.o.o. All Rights Reserved.

No part of this manual may be reproduced or transmitted in any form without the expressed, written permission of Tri plus grupa d.o.o.